

NORDHAUS

3 IN 1 Ice Slushie Machine

INSTRUCTION MANUAL

Model No: PLU 169035



FOR INDOOR HOUSEHOLD USE ONLY

Please read all instructions carefully before using the appliance and keep safe for future reference. Always follow these safety cautions when using the appliance to avoid personal injury or damage to the appliance. This appliance should be used only as described in this manual.

General Safety

- Read all instructions before use.
- This appliance is designed for household use and not for commercial use.
- Do not use outdoors.
- Do not use appliance for other than intended use.
- Never leave unattended while in use.
- Always disconnect the power supply before assembling, disassembling, adjusting, or cleaning any parts.
- Do not operate the appliance if it is damaged or malfunctioning.
- Do not immerse the appliance in water or any other liquid to avoid the risk of electric shock.
- Do not let the power cord hang over the edge of a table or come into contact with hot surfaces.
- This appliance can be used by children aged from 8 years and above and persons with reduced physical, sensory or mental capabilities or lack of experience and knowledge if they have been given supervision or instruction concerning use of the appliance in a safe way and understand the hazards involved.
- Children must not play with the appliance. Cleaning and user maintenance must not be made by children without supervision.
- If the supply cord is damaged, it must be replaced by the manufacturer or its service agent or a similarly qualified person in order to avoid a hazard.
- All parts should be replaced with the same parts and should be repaired by authorized maintenance personnel to minimize the risk of fire caused by incorrect parts or improper repairs.
- Repairs must only be carried out by authorized service personnel.
- Use only original replacement parts to reduce the risk of fire or electrical hazards.
- When unplugging the appliance, do not pull the power cord. Always pull the plug directly.
- Always unplug the appliance before cleaning, maintenance, or repair.
- Keep hands, hair, and clothing out of the container when loading and operating.
- During operation and handling of the appliance, avoid contact with moving parts.
- **Danger:** Do not store or use inflammable or explosive substances such as gas, paint, gasoline, etc. near or inside the appliance.
- **Warning:** Do not use electrical appliances inside the food storage compartments of the appliance unless they are recommended by the manufacturer.
- **Warning:** Keep all ventilation openings in the appliance enclosure or in the built-in structure, clear of obstruction.
- **Warning:** Do not damage the refrigerant circuit. Risk of fire due to flammable materials.
- **Warning:** Do not use mechanical devices or other means to accelerate the defrosting process unless recommended by the manufacturer.
- Never leave the appliance unattended while in use.
- Dispose of the appliance in accordance with local regulations, particularly those concerning appliances containing flammable blowing gases.

Electrical connection

- Power supply: The appliance is powered by alternating current (see product nameplate for the rated voltage and frequency). The permissible voltage fluctuation is $\pm 10\%$.
- Ensure that the wall socket and wiring are rated to carry at least 10A.
- Always connect the appliance to a dedicated, properly earthed (grounded) three-core power outlet to ensure safe operation.

Product introduction

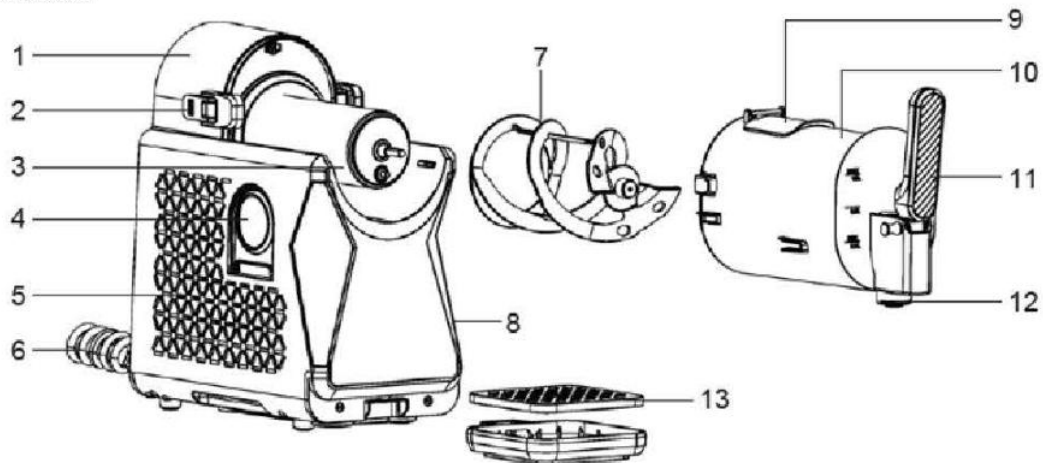
Product feature

- Uses high-efficiency compressor refrigeration technology to quickly produce cold drinks such as liquid beverages, slush drinks, soft scoop ice cream, etc., (depending on the product model) .
- Equipped with environmentally friendly refrigerants that do not damage the ozone layer and help reduce greenhouse effects.
- Designed with sound and light indicators to alert users to different operating states.
- Transparent, detachable container for easy viewing of the production process.
- The handle is for convenient and controlled dispensing.

Name of each part

All illustrations in this manual are schematic diagrams!

- | | |
|------------------------------|-------------------------|
| 1. Main Unit / Motor Housing | 8. Control Panel |
| 2. Container Locking Clip | 9. Filling / Refill Lid |
| 3. Evaporator | 10. Freezing Bowl |
| 4. Cone Holder Stand | 11. Handle |
| 5. Ventilation Grille | 12. Dispensing Outlet |
| 6. Power Cord | 13. Drip Tray and Cover |
| 7. Mixers | |



Handing and placing

Handling

- Only lift the machine using the designated lifting points or from the bottom of the unit.
- Do not tilt, lay flat, or invert the appliance during transportation or handling. Horizontal lifting or inversion is strictly prohibited.

Placement

- Place the appliance on a stable, level surface. An uneven surface may cause instability and pose a safety risk.
- Place the appliance in a dry, well-ventilated area with sufficient airflow.
- To prevent overheating and ensure optimal performance, maintain a minimum clearance of:
 - 30 cm around the ventilation grille
 - 30 cm above the top of the appliance.
- Do not cover or block the ventilation grille.
- Keep the appliance away from curtains and other flammable materials.
- Avoid placing the appliance near heat sources or in direct sunlight.
- **Warning:** When positioning the appliance, ensure the supply cord is not trapped or damaged. Do not place multiple portable socket outlets or portable power supplies behind the appliance.
- **Warning:** The appliance must not be installed in corridors or public buildings hallways.

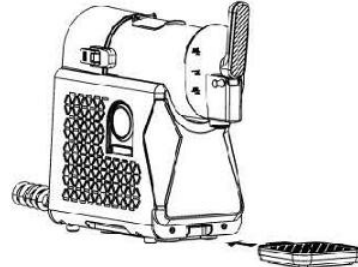
Using

Before First Use

- Remove all packaging materials, including the foam pad at the bottom of the appliance and any foam pads and adhesive tape used to secure internal accessories.
- Check that all supplier accessories and components are present.
- Position the appliance according to the instructions in the "Handling" and "Placement" sections.
- Clean both the interior and exterior of the appliance following the "Cleaning Instruction".
- This appliance has undergone a water test at the factory. As a result, a small amount of residual water or water marks may be present. This is normal and does not affect performance, which is a normal phenomenon.
- If the appliance has been moved or tilted, allow it to stand upright for at least 30 minutes before switching it on. Failure to do so may reduce cooling performance or, in severe cases, damage the cooling system.

Start using

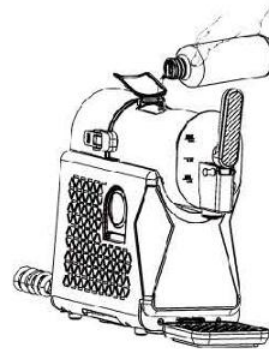
- Plug the appliance into the power outlet in accordance with “Electrical Connection” instructions. Ensure the plug is fully and securely inserted. A loose plug may cause overheating of the plug or socket, potentially leading to damage or fire.
- Insert the water drip tray into the front of the machine base (as shown in the illustration).



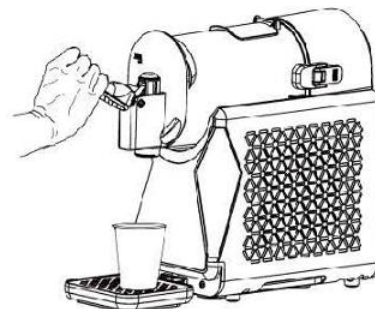
- Add ingredients
 - Open the lid of the filling port.
 - Slowly pour the liquid ingredients into the container through the filling port, then close the lid securely.

Important Notes

- Do not add hot ingredients.
- Do not add ice cubes or solid ingredients.
- All ingredients must contain at least 6% sugar or 1.5%-16% alcohol.
- Add minimum 400ml of liquid.
 - If using soft scoop ice cream solution (for example: a mixture of soft ice cream powder and liquid), the maximum amount that can be added is 800ml.
 - For all other beverage solutions the maximum filling amount is 1300ml.
- For the best result, fill the container up to the maximum fill line indicated for the specific type of ingredient being used.
- Refer to the “Control Panel and Function Settings” instructions for proper setup and startup.
 - Select the appropriate menu according to the ingredients added.
 - Activate the cooling mode to begin the freezing process.
 - Select the desired hardness level based personal preference. The default setting is “0” level, which produces a softer texture. Higher levels result in a firmer consistency.



- **Allocation / Dispensing**
 - Place the container under the dispensing outlet.
 - Gently push the handle toward the material container to release the beverage.
 - If the flow is slow or uneven, you can quickly push the handle several times to help dispense the drink smoothly.



- **Tips**

- The production time may vary due to various factors such as room temperature, ingredient composition, initial ingredient temperature, and hardness settings.
- Pre-cooling of ingredients before production can further improve production efficiency.
- When using natural fruit juices, it is recommended to strain them to prevent solid particles from blocking the dispensing outlet.
- Do not disassemble the container while ingredients are inside.
- Once product is complete, the appliance will automatically enter the insulation mode. If no further operation is performed, this mode can be maintained for up to 8 hours.

Control panel and function settings

- Icon Definition

		Digital display		Power On / Off Button
		Start / Stop (Operation) Button		Liquid cold drinks
		Menu Button		Slushy
		Hardness Adjustment Button		Soft Scoop Ice Cream
		Cleaning / Mixing Button		

- **On / Off**

- When the appliance is connected to the power supply, the power indicator flashes. Press the Power On/Off button to enter standby mode.
- In standby mode, if no buttons are pressed for 15 minutes, the appliance will automatically switch off.




- **Cleaning / Mixing Button**

- In standby mode, briefly press the Cleaning / Mixing button to start Cleaning / Mixing mode.
- This process lasts approximately 15 minutes. When finished, the appliance will automatically return to standby mode.

- **Cooling mode**

- In standby mode, briefly press the Start / Stop (Operation) button to enter cooling mode.
- Press the Hardness Adjustment Button to set the desired hardness level (0-9, with higher numbers indicating a firmer texture).
- Each press of the button is confirmed by a “beep” sound.

• **Hardness Adjustment Range**

Icon	Adjustment range
	Liquid cold drinks: only available in "0" one level, not adjustable
	Slushy: levels "0" to "9", adjustable in a continuous loop
	Soft Scoop Ice Cream: "0-2" 3 levels, adjustable in a continuous loop

• **When the following Indicator appear:**

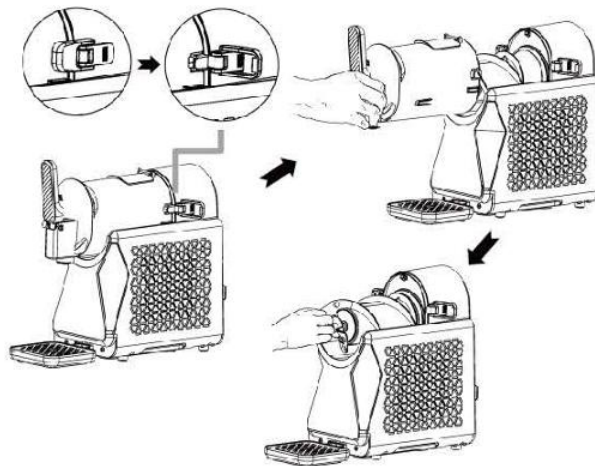
- If the digital display shows "□", check if the container is correctly installed.
- If the digital display shows "L", this indicates "low sugar" content. Add an appropriate amount of sugar.
- If the digital display shows "H", it means "high alcohol" content. Add other ingredients to dilute the mixture.
- If the digital screen displays "□", it means the motor has stalled. Switch off the machine and restart it after a short period.

Cleaning and maintenance

Removal and Installation of Containers and Mixing Paddle

Disassembly

- Release the locking latch of the container and keep it in an open position. Hold the dispensing outlet of the container and carefully pull the container outwards to remove it.
- After removing the container, gently pull the mixer paddle out of the evaporator to remove it.



Installation

- Insert the mixer paddle into the evaporator and rotate it at a slight angle until it reaches the bottom of the shaft.
- Push the container according to the base guide rail, ensuring it is securely in place. Then lock the container lock latch to prevent the container from being easily pulled out.

Cleaning

- Precautions for cleaning the main unit
 - Always unplug the appliance before cleaning.
 - Ensure water does not enter electrical components during cleaning.
 - Do not use abrasives cleaners, acidic substances, chemical solvents (such as alcohol), or polishing agents to clean the machine.
 - Use a soft damp cloth or neutral detergent to wipe down the surface.
 - You can clean the surface of the evaporator with a small amount of water. Water should flow along the lower guide groove and into the drip tray.
- The container and mixer paddle can be directly rinsed with water.

Maintenance

- Store the machine in a dry and well-ventilated area, ensuring it is not close to heat sources or exposed to direct sunlight.
- Ingredients that are too hot should be allowed to cool to room temperature before being used in the machine.
- Regularly clean the ventilation grille to maintain proper airflow.

Other matters

- Shutting Down and Storing the Machine
 - To shut down, simply unplug the power cord..
 - If you intend to store the machine for a period of time, clean and dry it first to prevent unpleasant odours from forming.
 - Important: Ensure that no food is left in the machine when storing the appliance.

Analysis of Operating Sounds

- When the refrigeration system is running, you may hear a "hissing" or "sizzling" sound caused by the refrigerant flowing through the pipes.
- When the refrigeration system is running, you may hear a soft "whooshing" sound produced by the fan.
- A scraping noise may be heard when the mixer paddle rotates.
- These sounds are normal and do not indicate any fault with the machine.

It is also normal for the mixer paddle to briefly pause during operation.

Troubleshooting

Phenomenon	Possible reasons	Processing method
No display on the operation panel, no prompt sound when pressing buttons	The power plug is not properly connected. Power outage. Malfunction in the electronic control system.	Ensure the power cord is properly plugged in. Check for power outage. Have professional personnel inspect and repair the electronic control system.
Leakage and seepage of ingredients	Worn seal or foreign objects in the seal.	Inspect the seals, remove any foreign objects, or replace the seals as needed.
Display 'E'	Sensor damage	Have professional personnel inspect and repair.
Unable to eliminate "□"	Limit switch damaged	Have professional personnel inspect and repair.
Unable to eliminate "□"	Mixing motor damaged	Have professional personnel inspect and repair.
Correct operation and display, but fails to cool	Ventilation grille blocked. Fan not working. Refrigeration system malfunction.	Remove items near the ventilation grille and clean any dust. Have professional personnel inspect and repair.
Abnormal noise	Resonance. Noise from internal moving or control components.	Ensure no objects are touching the machine that could amplify vibration. This is normal in some cases due to internal vibrations. If noise persists, have professional personnel inspect and maintain.
Display icon missing	Control panel malfunction	Have professional personnel inspect and replace the control panel.

Disposal Considerations



This marking indicates that this product should not be disposed with other household wastes throughout the EU. To prevent possible harm to the environment or human health from uncontrolled waste disposal, recycle it responsibly to promote the sustainable reuse of material resources. To return your used device, please use the return and collection systems or contact the retailer where the product was purchased. They can take this product for environmental safe recycling.

Ogalas ULC
Unit 4 Parkway House
Ballymount Drive
Dublin
D12 ECR9