



GILL & HOBBS

— LIGHTING —

9" DESK FAN

PLU - 134288

INSTRUCTION MANUAL



Welcome

Thank you for purchasing this product. Please read all instructions and warnings carefully before use, failure to follow instructions listed may result in electronic shock, fire or serious injury.

Your 9 Inch Desk Fan

In The Box

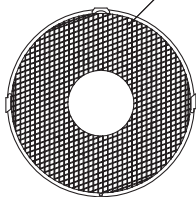
Carefully remove your 9 inch desk fan from the box.

- Motor with Base Stand
- Fan Blade
- Front Grille
- Back Grille
- Back Grille Mounting Nut (located on the motor shaft)
- Instruction Manual

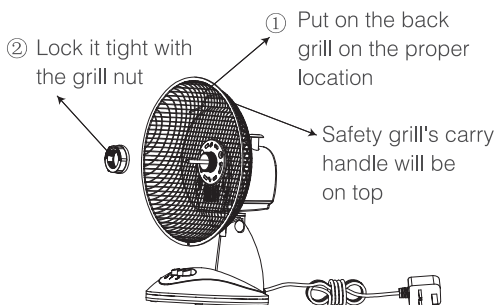
Assembly

STEP 1

Front Grill with decoration panel

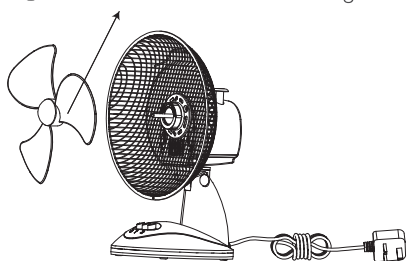


STEP 2



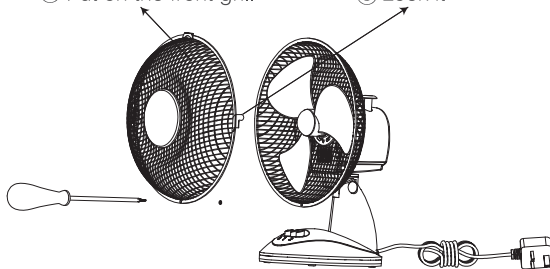
STEP 3

③ Insert the blade into the bearing

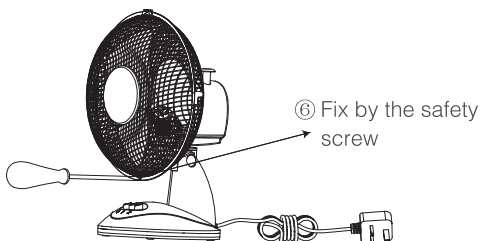


STEP 4

④ Put on the front grill ⑤ Lock it



STEP 5



STEP 6



Using Your 9 Inch Desk Fan

- Place your fan on a level and dry surface.
- Plug the power cord into AC220-240V wall outlets.

Speed is controlled by the button switch.
(0=OFF, 1=Low, 2= High).

To turn the fan on, press the desired button switch.
(1= Low, 2= High).

Oscillation Control

To make the fan oscillate, push down on the oscillation knob located on the top of the motor housing. To stop the fan from oscillating, pull up on the oscillation knob when the fan is in the desired position.

Tilt Control

The airflow can be adjusted upward or downward by tilting the fan head as desired.

- UNPLUG the fan before cleaning.
- Use only a soft, damp cloth to gently wipe the fan clean.
- DO NOT use gasoline, paint thinner or other chemicals to clean the fan.
- Remove the Front Grille.
- Gently wipe the Fan Blade and Grilles with a damp cloth.
- Re-assemble the fan by following the last three steps in
ASSEMBLY OF BLADE AND GRILLE

For storage, disassemble and clean the fan carefully as instructed and store in its original box. You may leave the fan assembled and covered to protect it from dust. Store the fan in a cool, dry place.

Cleaning & Maintenance

- Before cleaning, always unplug the fan until it is completely cool down, then dis-assembly fan guards for cleaning.
- Keep the air vents on the motor unit free from dust – use a vacuum cleaner to remove when necessary. Do not probe any opening to remove dust.
- Clean the body/grille/fan blade using a damp cloth. Do not allow any water to get in the motor. Then wipe with a dry cloth.
- Do not use harsh detergents, chemical cleaners or solvents as they may damage the surface of the fan.

Technical Specification

PLU	134288
Power Supply	220-240V~
Rated Frequency	50 - 60Hz
Power	22W

Product information requirements	
Maximum fan flow rate (F)	14.38 m³/min
Fan power input (P)	19.10 W
Service value (SV)	0.75 (m³/min)/W
Measurement standard for service value	Commission Regulation (EU) No 206 / 2012 : EN IEC 68079:2019 EN IEC 60704-2-7:2020 EN IEC 60704-1:2021 EN 50564:2011
Standby power consumption (PSB)	0 W
Fan sound power level (LWA)	54.22 dB(A)
Maximum air velocity (c)	2.20 meters/sec



OGALAS ULC
D12 ECR9
MADE IN CHINA

Cleaning and user maintenance shall not be made by children without supervision.

Disposal of the unit

WEEE

Information on Waste Disposal for Consumers of Electrical & Electronic Equipment

This mark on a product and/or accompanying documents indicates that when it is to be disposed of, it must be treated as Waste Electrical & Electronic Equipment (WEEE).

Any WEEE marked waste products must not be mixed with general household waste, but kept separate for the treatment, recovery and recycling of the materials used.

For proper treatment, recovery and recycling; please take all WEEE marked waste to your Local Authority Civic waste site, where it will be accepted free of charge.

If all consumers dispose of Waste Electrical & Electronic Equipment correctly, they will be helping to save valuable resources and preventing any potential negative effects upon human health and the environment, of any hazardous materials that the waste may contain.

General safety

- Ensure that you read all of the safety instructions before using this product.
- This product has been designed and manufactured to meet European safety standards, but like any electrical equipment, care must be taken if you are to obtain the best results and safety is to be assured.
- Do read the operating instructions before you attempt to use the product.
- Do ensure that all electrical connections (including the mains plug, extension leads and interconnections between pieces of equipment) are properly made in accordance with the instructions.
- Switch off and remove the mains plug or mains adapter when making or changing any connections.
- Do consult your dealer if you are ever in doubt about the installation, operation or safety of your product.
- Don't remove any fixed covers as this may expose you to dangerous voltages.
- Don't continue to operate the product if you are ever in doubt about it working normally, or if it is damaged in any way. Switch it off, withdraw the plug from the mains and consult your dealer.
- There are no user serviceable parts in the product. When servicing, refer to qualified service personnel.
- Don't leave the product switched on when it is unattended for long periods of time, unless it is specifically stated that it is designed for unattended operation or has a standby mode.

- Don't obstruct the ventilation vents on the product, for example with curtains or soft furnishings, as this may cause overheating.
- Do not place the product in closed bookcases or racks without proper ventilation.
- Do not use the product in humid or damp conditions or allow it to be exposed to rain or moisture.
- Store the product in a clean, dry environment.
- The product shall not be exposed to dripping or splashing and no objects filled with liquids, such as vases, shall be placed on it.
- Position the power cable and other connected cables so that they are not likely to be walked on, pinched or where items can be placed on or against them.
- Never allow children to insert foreign objects into holes or slots on the product.
- No naked flame sources, such as lighted candles, should be placed on the product.
- Disconnect the product from the mains supply before cleaning.
- Do not use any liquids or aerosol cleaners, as this may damage the product. Use a soft, dust-free cloth.
- Contact local authorities for means of disposal.
- Make sure that other people in your household are conversant with operation of the product.

Product Safety

READ CAREFULLY AND KEEP FOR FUTURE REFERENCE.

When using electrical appliance basic safety precautions should be followed, including the following:

- This appliance can be used by children aged from 8 years and above and persons with reduced physical, sensory or mental capabilities or lack of experience and knowledge if they have been given supervision or instruction concerning use of the appliance in a safe way and understand the hazards involved.
- Children shall not play with this appliance.
- Cleaning and user maintenance shall not be made by children without supervision. Ensure that the fan is switched off from the supply mains before removing the guard.
- If the supply cord is damaged, it must be replaced by the manufacturer, its service agent or similarly qualified persons in order to avoid a hazard.
- Use this fan only as described in this manual. Other use not recommended may cause fire, electric shock or injury to persons.
- This product is intended for household use ONLY and not for industrial or outdoor use.
- To protect against electric shock, do not place fan in window, immerse unit, plug or cord in water or spray with liquids.
- Close supervision is necessary when any appliance is used by or near children.
- Press the OFF button and unplug the fan from the outlet when not in use, when moving the fan from one location to another and before cleaning.
- To disconnect the fan, first press the OFF button, grip the plug and pull it from the wall outlet. Never pull by the cord.
- Do not operate the fan in the presence of explosive and/or flammable fumes.
- Do not place the fan or any parts near an open flame, cooking or other heating appliance.
- Do not operate the fan with a damaged cord or plug or if the product malfunctions, is dropped or damaged in any manner (see warranty).

Product Safety (Continue)

- Avoid contact with moving fan parts.
- The use of attachments not recommended by the manufacture may be hazardous.
- Place the fan on a dry, level surface.
- Do not hang or mount fan on a wall or ceiling.
- Do not operate if the fan housing is removed or damaged.
- A loose fit between the AC outlet (receptacle) and plug may cause overheating and a distortion of the plug. Contact a qualified electrician to replace loose or worn outlet.

Electrical information (Fixed Mains Plug Only)

The mains lead supplied with this product is fitted with a BS1363/A 13 amp plug. If it is not suitable for your supply sockets it must be replaced with an appropriate plug.

If the plug becomes damaged and/or needs to be replaced please follow the wiring instructions on the next page. The plug removed must be disposed of immediately. It must not be plugged into a supply socket as this will be an electrical hazard.

If the fuse needs to be replaced it must be of the same rating and ASTA approved to BS1362. If the plug is changed, a fuse of the appropriate rating must be fitted in the plug, adapter or at the distribution board. If the fuse in a moulded plug is replaced, the fuse cover must be refitted before the appliance can be used.

Wiring instructions

The supply cable will be either 2-core or 3-core. Follow the appropriate wiring instructions shown. In both cases ensure that the outer sheath of the cable is firmly held by the cable clamp.

Electrical information (Power adapters only)

Never open the power adapter, you risk getting an electric shock.

Only use the power adapter that is supplied with your product.

You must always connect the power adapter to the product before connecting to the mains power supply.

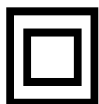
The power adapter must be used indoors only, and must not be subjected to damp conditions.

The power adapter does not have any user serviceable parts.

2-core plug



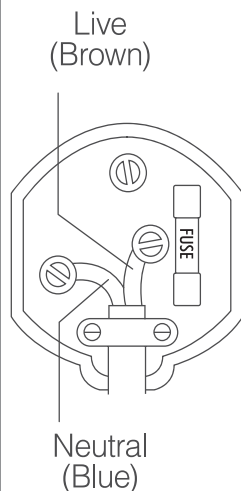
WARNING: Do not connect either wire to the earth terminal.



This symbol indicates that this 2-core appliance is Class II and does not require an earth connection.

The wire coloured blue must be connected to the terminal marked with the letter N or coloured black.

The wire coloured brown must be connected to the terminal marked with the letter L or coloured red.



3-core plug



WARNING: This appliance must be earthed.



The wire coloured green and yellow must be connected to the terminal marked with the letter E, or by the earth symbol, or coloured green or green and yellow.

The wire coloured blue must be connected to the terminal marked with the letter N or coloured black.

The wire coloured brown must be connected to the terminal marked with the letter L or coloured red.

