

NORDHAUS™

CAPSULE POD Coffee Maker

INSTRUCTION MANUAL



Model: PLU169041

220-240V~ 50/60Hz 1450W

Please read this Instruction Manual and the safety instructions before operating the appliance!

Congratulation on your purchase!

This coffee Capsule machine is manufactured with the greatest care. If you look it after properly it will reward you with many years of good service. Before using your new machine, please read this operating manual carefully, paying particular attention to the safety precautions.

CONTENT

1. Safety precautions
2. Notes on this operating manual
3. Unpacking
4. Starting up
5. Overview of machine parts and controls
6. Before using for the first time
 - Filling/refilling the water tank
 - Flushing out the machine/internal piping
7. Capsule type can be used
8. Standby Mode
 - Factory Default setting: Standby
 - Standby mode setting
 - Clean mode function
 - Coffee Volume Setting
 - Factory default setting
9. Cleaning
10. Energy saving mode
11. Decalcification
12. Troubleshooting
13. Technical data

1. Safety precautions

Please read these safety precautions carefully before connecting your machine to the power supply. It is essential to follow these instructions and the operating instructions.

- Read this entire operating manual before use.
- Danger of electric shock! Never immerse the machine in water or any other liquid.
- Connect only to a properly grounded power outlet.
- Before connecting the appliance to the power supply, check that the voltage indicated on the appliance corresponds to the mains voltage in your country.
- To ensure the machine is switched off, always remove the plug from the power outlet.
- Always unplug the machine before:
 - * Relocating the machine
 - * Cleaning or maintenance
 - * Long periods of disuse
- Never clamp or run the power cable over sharp corners or edges.
- Danger of electric shock! Damaged power cables must be replaced at the approved service centre.
- Danger of electric shock! Never touch the power plug, socket, cable or the machine with damp or wet hands. Never unplug by pulling out the power cable; always pull the plug.
- If you require an extension cable, make sure it is suitable for your machine (3-pole grounded, 1.5 mm² conductor cross-section), and lay it to avoid tripping.
- Danger of scalding! Never move the machine during operation!
- Never operate the machine without water
- Always ensure the water tank is filled above the minimum level.
- Danger of burns! Do not touch very hot parts of the machine (e.g. the brew unit during operations).
- Danger of scalding! Do not touch the steam or hot-water jets.
- Danger of scalding! Do not move the operating lever when the machine is still under pressure making coffee.
- Do not use the machine if:
 - * It is operating incorrectly
 - * The power cable is damaged

- * It has been dropped or otherwise damaged.
- * In such cases immediately have the machine checked and repaired by the approved service centre.
- The machine's location must meet the following requirements:
 - * Place it on a dry, stable and level support surface not directly under the power outlet and at least 60 cm away from the washbasins and taps.
 - * Never place it on flammable or heat-sensitive surfaces.
 - * Never place the machine or power cable on or within 50 cm of hot surfaces or open flames.
 - * Never cover the machine during operation.
- Keep children away from the machine during operation.
- Use the machine only in dry indoor rooms.
- Danger of tripping! Do not let the power cable hang down.
- This machine is intended for household use only.
- Unplug and allow the machine to cool completely before cleaning or maintenance.
- To avoid damage, never use replacement parts or accessories not recommended by the manufacturer.
- This appliance can be used by children aged from 8 years and above if they have been given supervision or instruction concerning use of the appliance in a safe way and if they understand the hazards involved. Cleaning and user maintenance shall not be made by children unless they are older than 8 and supervised. Keep the appliance and its cord out of reach of children aged less than 8 years.
- Persons with reduced physical, sensory or mental capabilities or lack of experience and knowledge may use the appliance only if supervised or instructed in safe use and understanding of the hazards. Children must not play with the appliance.
- If the power cord is damaged, it must be replaced by the manufacturer, its service agent or similarly qualified persons in order to avoid a hazard.
- This appliance is for household and indoor use only.
- Caution! Potential injury may result from misuse.
- Heating element surfaces remain hot after use.
- Do not place the coffee maker inside a cabinet while in use.
- Cleaning and user maintenance must not be performed by children without supervision.

2. Notes on this operating manual

Please keep this operating manual safe place and pass it on to on to any subsequent user of the appliance.

3. Unpacking

- Remove your espresso capsule coffee machine from its packaging.
- After unpacking, please check that the following parts are included:
 1. Water tank
 2. Coffee machine
 3. Instruction Manual

Note:

- Check that your home power supply voltage is the same as marked on the machine rating plate
- Destroy all the plastic bags to prevent danger to children!

Tip:

Keep the packaging for transporting the machine (e.g. for removals, servicing, etc.)

Note:

You may find a little water remaining in the machine.

In order to ensure that this machine works perfectly, it was tested with water before leaving the factory.

- DANGER OF FROST

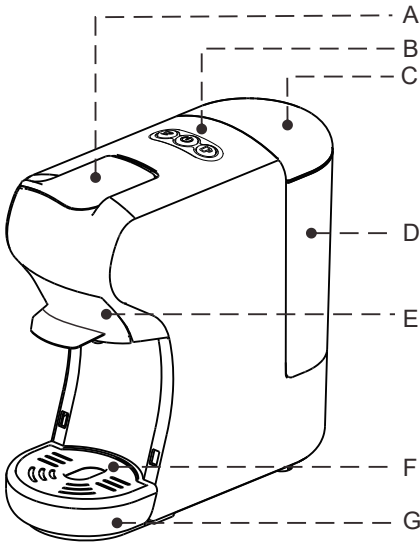
4. Starting up

Before using for the first time

Caution: Improper handling of electrical equipment is hazardous and can be fatal. Please pay close attention to the safety precautions in this manual, especially the following:

- Risk of scalding: Beware of hot water!
- Do not operate the machine with an empty water tank or when the water below MINIMUM level.
- Do not open the handle when the machine is brewing.
- Always unplug the machine from the mains before cleaning.
- Only use the machine in a dry indoor environment.
- Before first use, thoroughly rinse the water tank with fresh water.

5. Overview of machine parts and controls



No.	Name
A	Handle
B	Buttons
C	Water tank cover
D	Water tank
E	Brewing basket
F	Drip tray cover
G	Drip tray (removable)

6. Before using for the first time

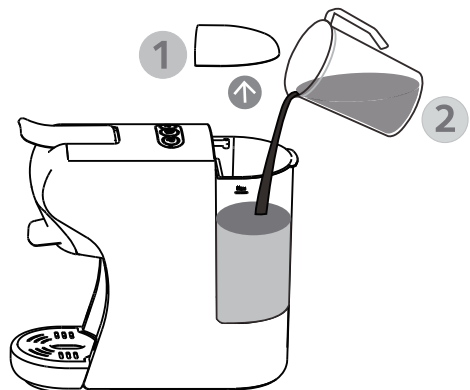
Before using for the first time or after long periods of non-use (e.g. holidays) the machine must be flushed. This short procedure thoroughly rinses and cleans the internal piping.

There are two ways to fill the water tank: directly into the machine, by using a jug, for example, or by removing the water tank.

1

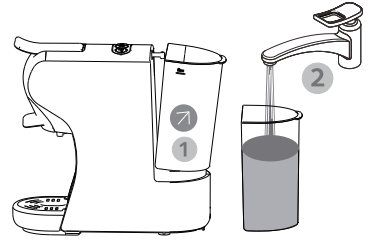
Filling without removing the tank

- raise the water tank cover
- Fill the tank with cold fresh water
- the maximum capacity is 0.6 litre
- low down the tank cover



2 Filling by removing the water tank

- Hold the water tank grip at a slight angle, as shown and pull in the indication to remove the tank from the machine.
- Fill the tank with fresh, cold water to the “MAX” mark (the maximum capacity is 0.6 litres).
- Slide the water tank slowly onto the water tank base. When the water tank outlet is aligned and inserted into the inlet receptacle, push firmly on the water grip to lock the water tank into place.

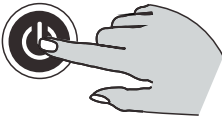


3



Connect the power supply

4



Press the switch button

The lights on the buttons will remain steady once the machine has heated up. The heating-up time is approximately 45 seconds.



5

Press the large cup coffee button, wait for the appliance to operate.

Before pressing the button, make sure that:

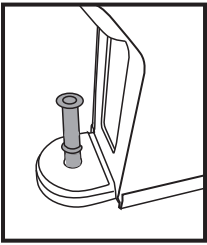
- The handle is closed without capsule inside.
- The water tank is full.
- The water tank is firmly in place; otherwise water may leak
- A large bowl (250ml size or larger) is placed under the dispenser.

Press the large cup coffee button to start the flushing process.

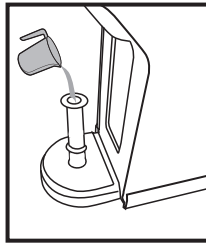
- When the flush-out cycle stops automatically, open the handle.
- Empty the cup.
- Flush-out cycle is in now complete.



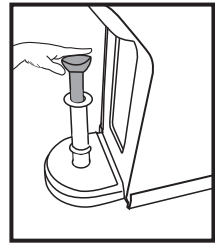
Before using for the first time or after long pauses (e.g. holidays) the machine may be difficult to pump water, this short procedure can help pump to self priming by using the pipe to fill water into the circuit manually prior to turn on the machine for first refill.



Step 1# : Insert the pipe into the water entrance.



Step 2# : fill water into the pipe.



Step 3# : Inject the water from pipe into the machine so that the internal circuit is filled with water.

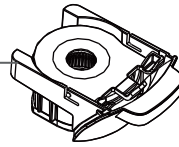
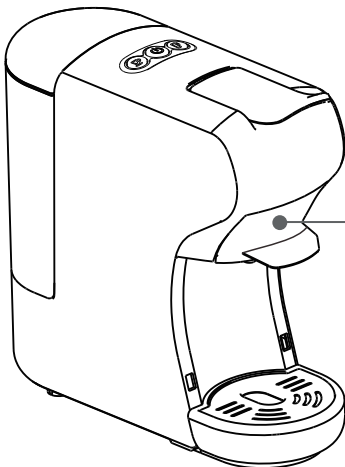
After above steps, the machine will be able to pump water out normally.

*** If necessary, repeat the steps for 2 or 3 times.**

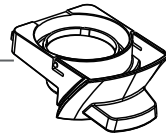
7. Capsule type can be used



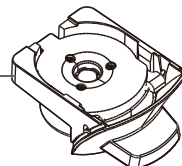
Tips: The machine has different adaptor for different capsules, details refer to below.



For espresso-style capsules

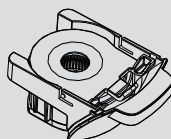


For larger drink capsules



For coffee powder

For espresso-style capsules

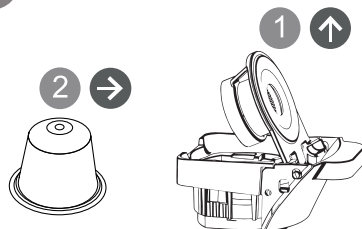


1



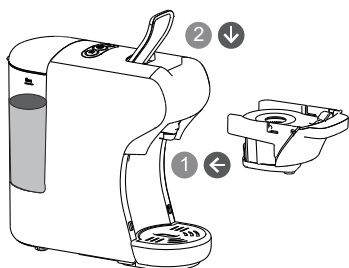
- Open the handle.
- Remove the brewing basket for espresso-style capsules.

2



- Press the brewing basket cover lid
- Insert a capsule to the brewing basket.

3



- Insert the brewing basket with capsule into the machine.
- Close the handle.

4

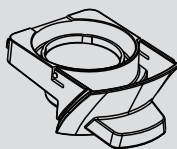
Place a cup under the dispenser

- If the appliance is in standby mode, press the power button first and wait until the button lights finish flashing.
- Press the desired coffee button once only.
- The selected button will blink and the machine will start brewing. The dispensing will stop automatically when default brewing time is reached (25s for short espresso, 47s large cup coffee).
- Raise the handle and remove the brewing basket to eject used capsule into the container.

Tips: when you press the button, the LED of the selected button may flash for a few seconds before brewing starts. This flashing indicated for the heating process and is normal performance.



For larger drink capsules



1



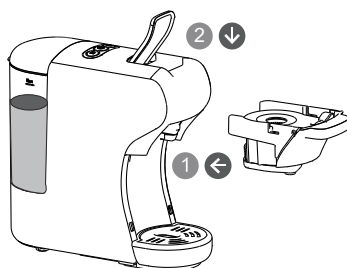
- Open the handle.
- Remove the brewing basket for larger drink capsules.

2



- Insert a capsule into the brewing basket.

3



- Insert the brewing basket with capsule into the machine.
- Close the handle.

4

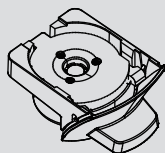
Place a cup under the dispenser

- If the appliance is in standby mode, press the power button first and wait until the button lights finish flashing
- Press the desired coffee button once only.
- The selected button will blink and the machine will start brewing. The dispensing will stop automatically when default brewing time is reached (25s for short espresso, 47s large cup coffee).
- Raise the handle and remove the brewing basket to eject used capsule into the container.

Tips: when you press the button, the LED of the selected button may flash for a few seconds before brewing starts. This flashing indicated for the heating process and is normal performance.



For Coffee powder

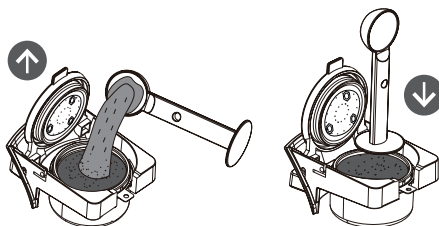


1



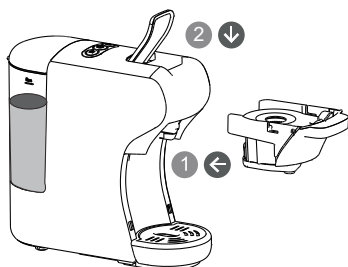
- Open the handle
- Pull out the brewing basket for coffee powder

2



- Add coffee powder
- Press down the coffee powder

3



- Insert the brewing basket with coffee powder into the machine.
- Close the handle.

4

Place a cup under the dispenser

- If the appliance is in standby mode, press the power button first and wait until the button lights finish flashing
- Press the desired coffee button once only.
- The selected button will blink and the machine will start brewing. The dispensing will stop automatically when default brewing time is reached (25s for short espresso, 47s large cup coffee).
- Raise the handle and remove the brewing basket to eject used capsule into the container.

Tips: when you press the button, the LED of the selected button may flash for a few seconds before brewing starts. This flashing indicated for the heating process and is normal performance.



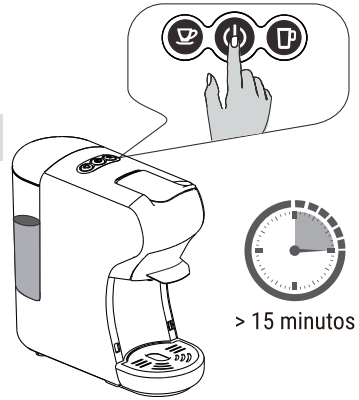
8. Standby Mode

Factory Default setting: Standby

Mode: 15 minutes

This means the machine will automatically switch off after 15 mins, and all the indicator lights will go out.

To reactivate the machine from standby mode, press the power button.

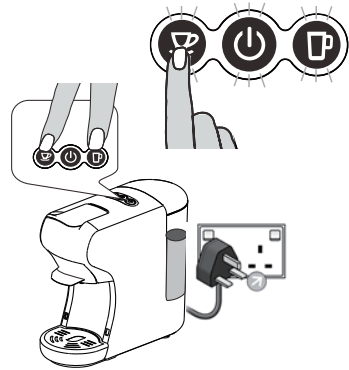


Standby mode setting:

Keep pressing both the small cup and large cup buttons, then insert the plug to the socket. The power button light will turn on.

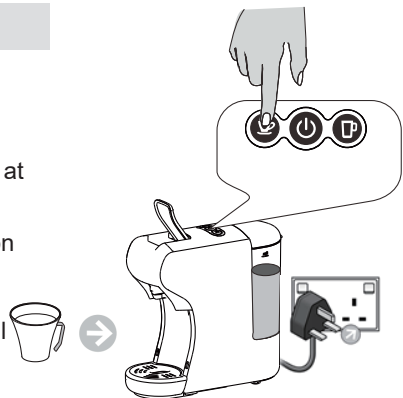
To cancel Standby Mode: press the small cup button the small cup button light will go off.

To activate Standby Mode: press the small cup button again the small cup button light will turn on.



Clean mode function:

1. Put a cup in front of the machine.
2. Put some detergent into the water tank.
3. Press the small cup and connect the power at the same time.
4. When the power button and small cup button lights are on, press the small cup button to start cleaning. The cleaning cycle lasts approximately 120 seconds. Press the small cup button again to stop the process if needed.



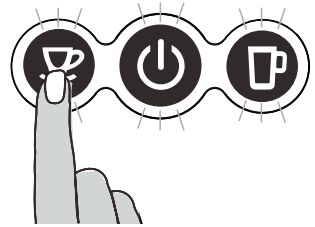
Coffee Volume Setting

Small Cup volume setting

1. Put coffee cup under the coffee outlet.
2. With the machine in normal operating mode, press and hold the small cup button. Release the button when the desired amount of coffee has been dispensed.

Minimum time: 15 seconds

Maximum time: 90 seconds

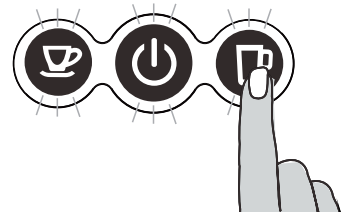


Large Cup volume setting

1. Put coffee cup under the coffee outlet
2. With the machine in normal operating mode, press and hold the large cup button. Release the button when the desired amount of coffee has been dispensed.

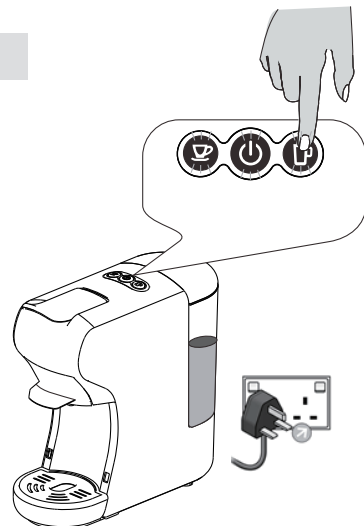
Minimum time: 15 seconds

Maximum time: 90 seconds



Factory default setting

Press the large cup button and insert the plug to the socket. The button indicator will flash twice, indicating that the machine has been reset to its factory default settings.



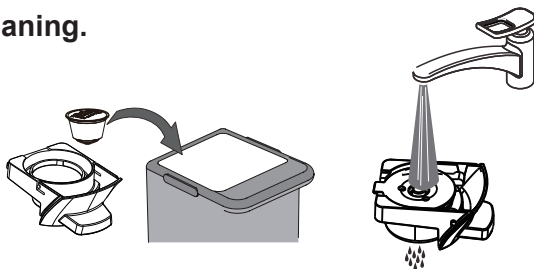
9. Cleaning



Risk of fatal electrical shock and fire.

- / Never immerse the appliance or any part of it in water or any other liquids.
- / Always unplug the machine before cleaning.
- / Do not use any strong cleaning agent or solvent-based cleaner.
- / Do not use sharp objects, brushes or abrasive materials.
- / Do not place the appliance in a dishwasher.

Brewing cup cleaning.



Holistic cleaning

Dry all parts with a clean towel, cloth or paper, then reassemble all parts.

Clean the coffee outlet and the interior of the machine regularly with a damp cloth.



Warning tips



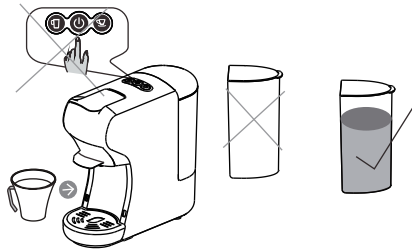
Do not attempt to draw water from the machine.



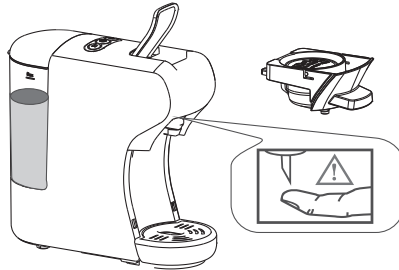
Do not open the handle while the machine is brewing.



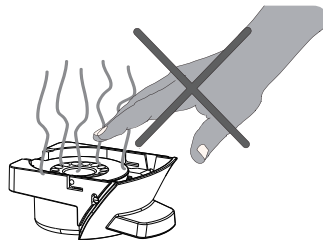
Before brewing, ensure there is at least 20 ml of water in the water tank.



There is a sharp needle above the capsule adaptor.
Do not place your hand or fingers near the needle after the adaptor has been removed.



The adaptor remains very hot after brewing.
Handle with care - HOT!



10. Energy saving mode

The machine automatically enters energy-saving mode after 15 minutes of inactivity. The backlight of two buttons and the power indicator will turn off.

To exit energy-saving mode, press the power button. The appliance will begin warming up, and the lights will blink. When the buttons lights remain steady, the machine is ready to brew coffee.

11. Descaling

Descaling / Maintenance

Drinking water hardness varies according to region. The lime particles in hard drinking water can accumulate inside the machine, blocking pipes and potentially causing damage. To prevent this, descale the machine at least every 300 to 400 cups of coffee or sooner, if:

- Coffee output decreases significantly
- One or two months have passed since the last descaling.

Descaling must be carried out correctly to prevent damage. It is essential to follow these instructions carefully.

Important:

- Never clean the machine with vinegar. This can damage it and adversely affect the taste of your coffee.
 - Damage caused by incorrect descaling or failure to descale is not covered by the guarantee.
 - Caution: Beware of hot water!
1. Recommendations: purchase commercially available descaling solution and diluted it according to the manufacturer's instructions. Pour the mixture into the water tank.
 2. Ensure that no capsule is inserted in the machine.
 3. Place a large bowl under the coffee outlet to collect the descaling solution and lime residues.
 4. Fill the water tank to the maximum level with the water–descaler mixture, ensuring it is fully dissolved.
 5. Press the large cup button to run descaling solution through the machine as if brewing coffee. Repeat for several times until water tank is empty.
 6. Refill the tank with another batch of the water–descaler mixture and repeat the process to ensure complete descaling.
 7. Finally, flush the machine by running a full tank of fresh water (without descaling solution) through the system to clean the internal circuit thoroughly

12. Troubleshooting

PROBLEM	CAUSE	SOLUTION
No coffee is brewed.	The water tank is empty.	Fill the water tank.
The coffee is not hot enough.	<ul style="list-style-type: none">- Cold cup or mug.- Scale build-up in the machine.- Machine is cold.	<ul style="list-style-type: none">- Preheat the cup or mug.- Descale the machine.- Brew a cup of water to warm up the machine.
Water on the table	<ul style="list-style-type: none">- Water tank is leaking.- Drip tray is full.	<ul style="list-style-type: none">- Check if the valve on the water tank is stuck.- Empty the drip tray.
Handle cannot close	<ul style="list-style-type: none">- Brewing basket is not correctly placed	<ul style="list-style-type: none">- Push the brewing basket into correct position

13. Technical data

Rated Voltage:	220-240V~
Rated Frequency:	50/60Hz
Rated Power:	1450W
N.W./G.W.:	2.5/3.4 kg appr.
Pump Pressure:	Max. 19 Bars
Water Tank Capacity:	0.6L
Size:	110mm(W)* 270mm(L) * 250mm(H)
ProtectionClass:	I

Design or execution changes are reserved in the interest of technical progress.



Correct Disposal of this product

This marking indicates that this product should not be disposed with other household wastes throughout the EU. To prevent possible harm to the environment or human health from uncontrolled waste disposal, recycle it responsibly to promote the sustainable reuse of material resources. To

return your used device, please use the return and collection systems or contact the retailer where the product was purchased. They can take this product for environmental safe recycling.

Ogalas ULC Unit 4 Parkway House Ballymount Drive Dublin D12 ECR9

